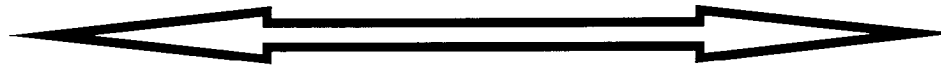


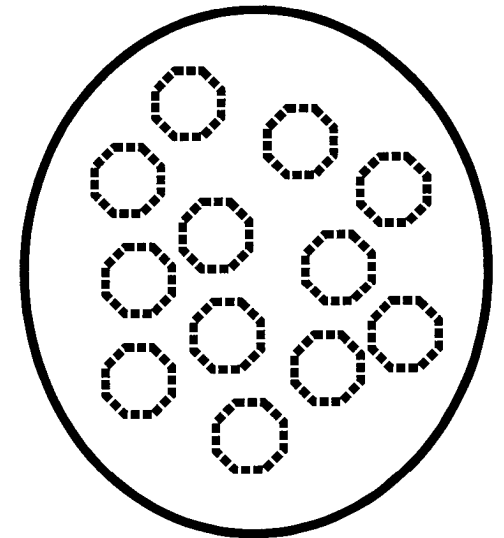
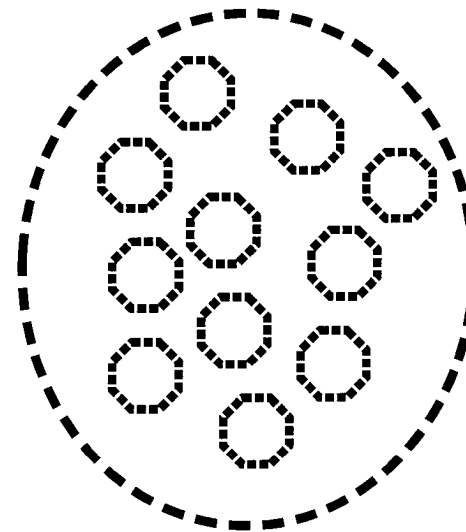
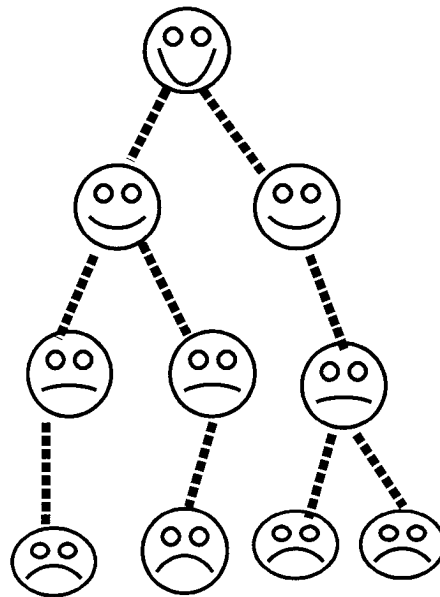
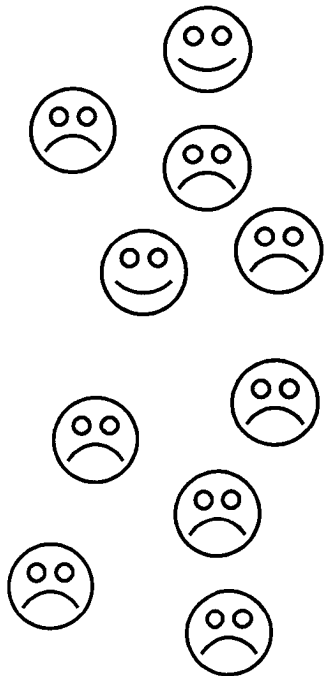
# Groups

# INDIVIDUAL — GROUP

**INDIVIDUAL**

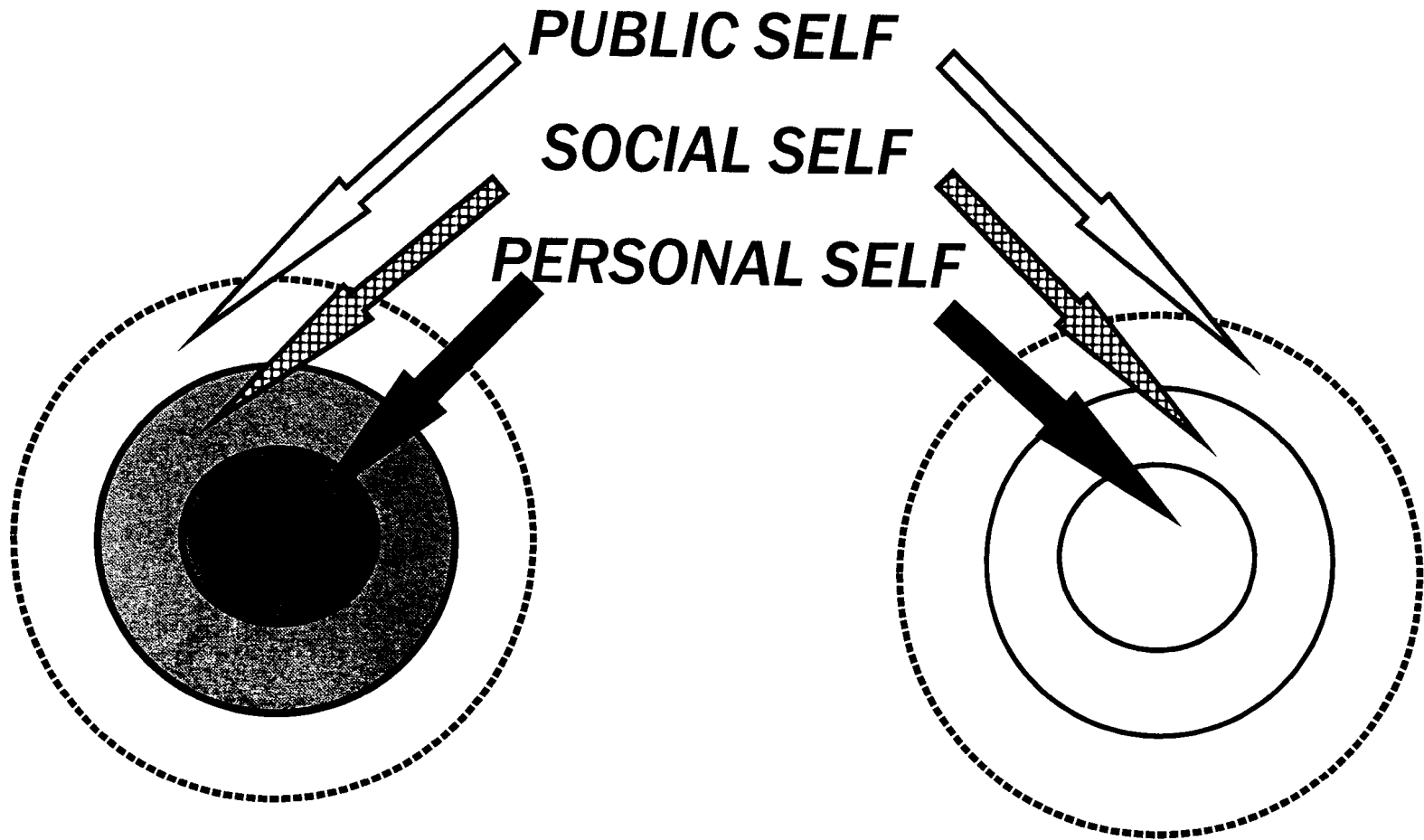


**GROUP**



# AMERICAN SELF

# JAPANESE SELF



# TYPES OF GROUPS

- **kinship groups**
- **geographic groups**
- **associations**

# NUMBER OF POTENTIAL RELATIONSHIPS IN A GROUP:

$$= \frac{(n)(n-1)}{2}$$

*PEOPLE*

*POTENTIAL  
RELATIONS*

5

10

10

45

50

1,225

100

4,950

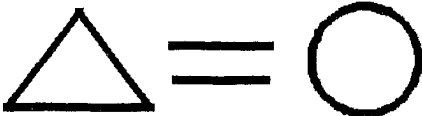
1,000

499,500

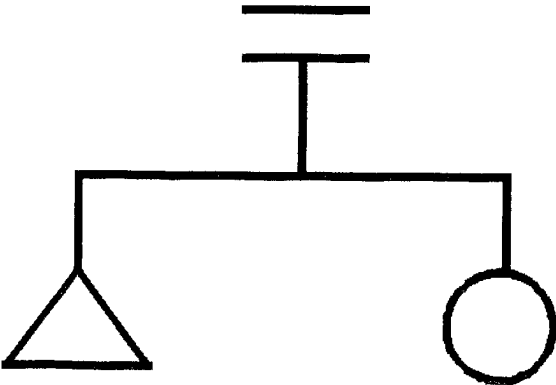
# **Kinship Groups**

BASIS FOR KINSHIP GROUPS

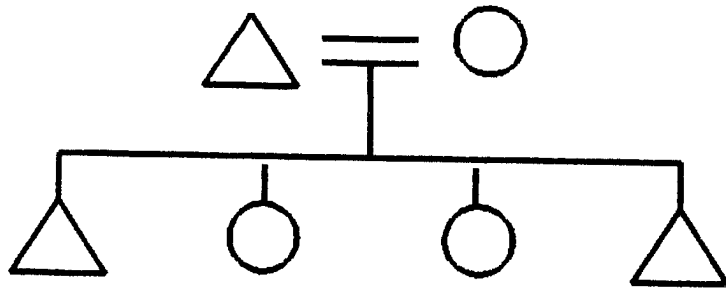
MARRIAGE:



DESCENT:

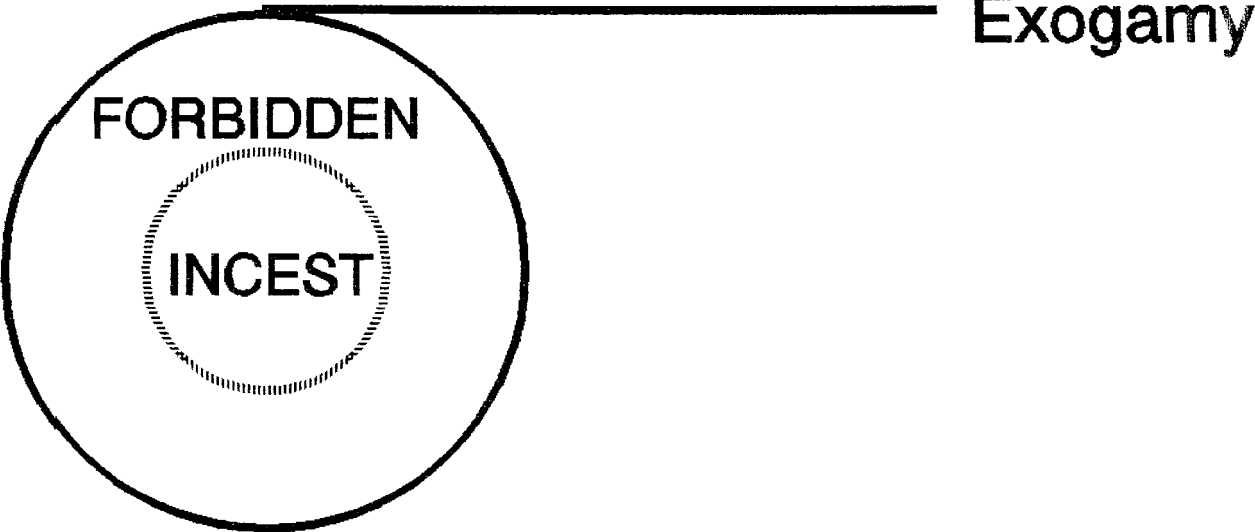


# FAMILY ROLE PAIRS

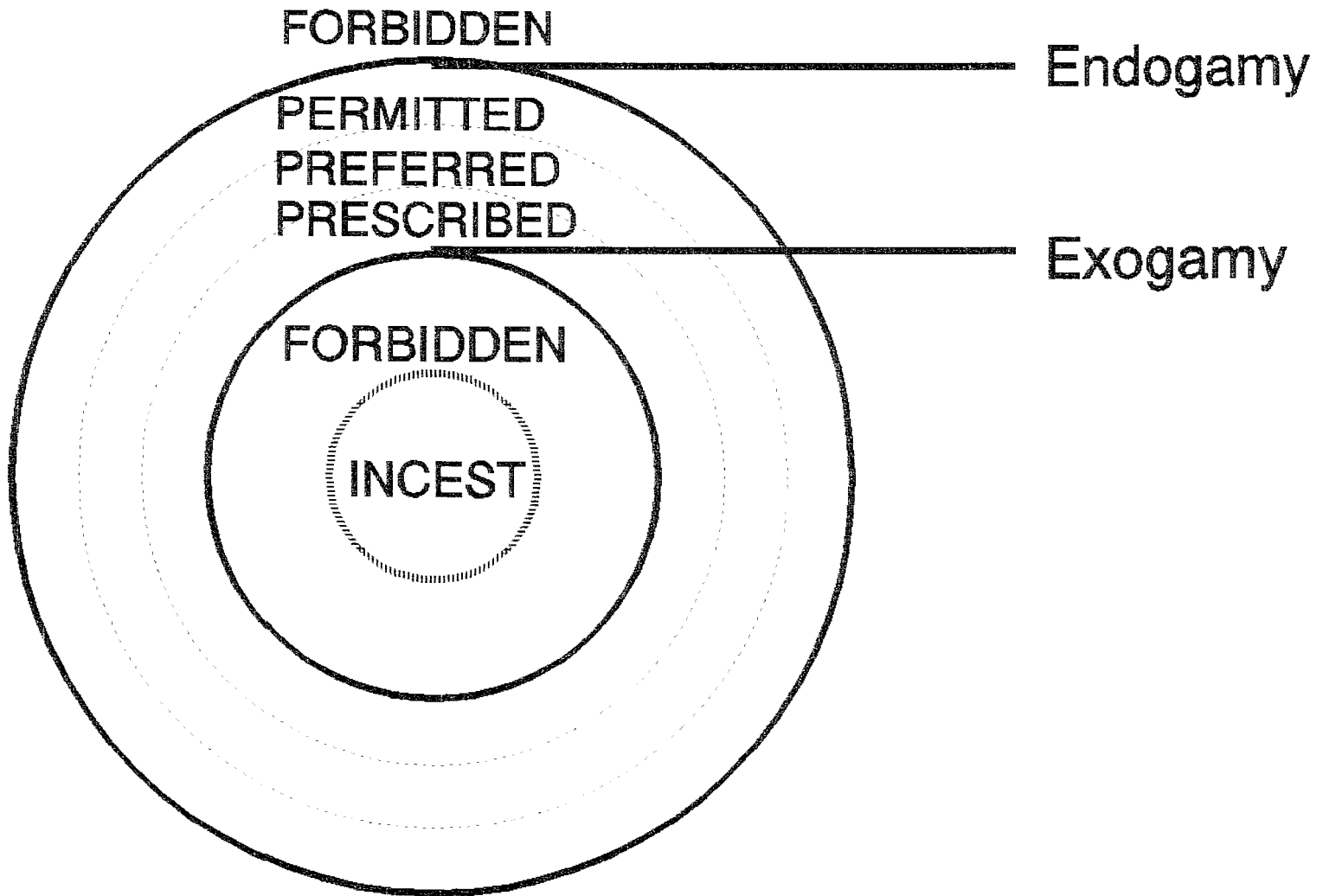




MARRIAGE REGULATIONS

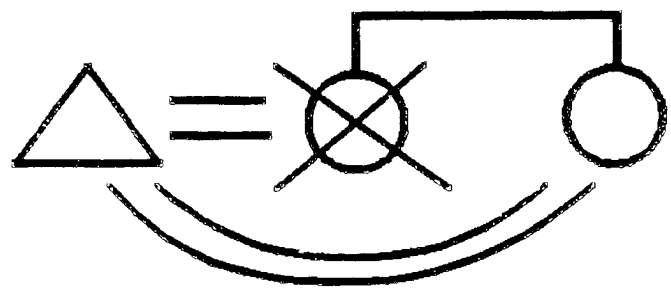


# MARRIAGE REGULATIONS

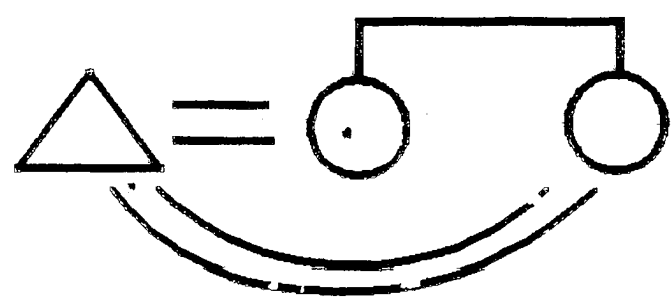


# FEMALE SUBSTITUTE MARRIAGES

SORORATE:

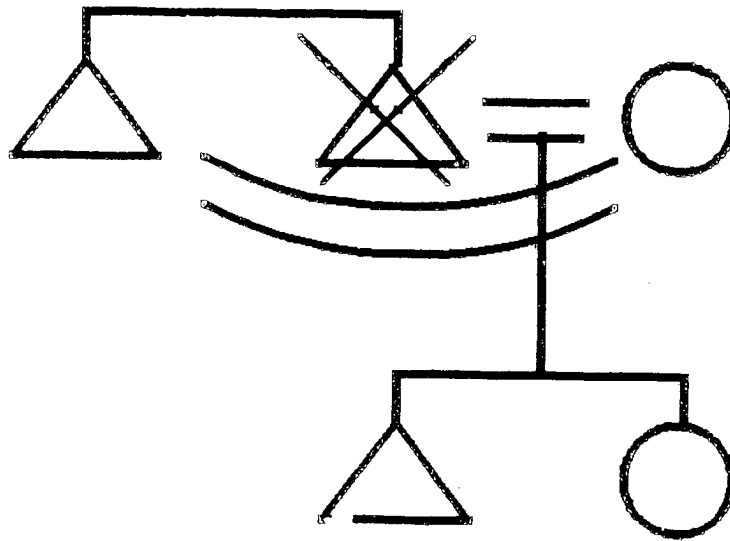


ANTICIPATORY SORORATE:

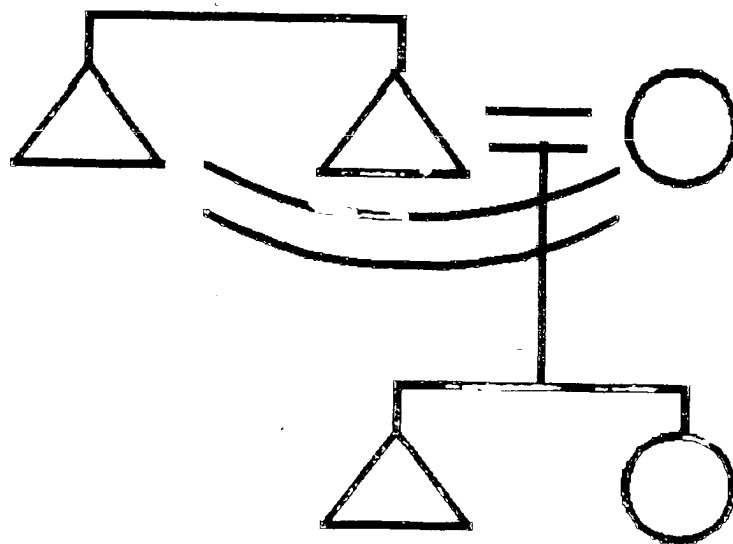


# MALE SUBSTITUTE MARRIAGES

LEVIRATE:

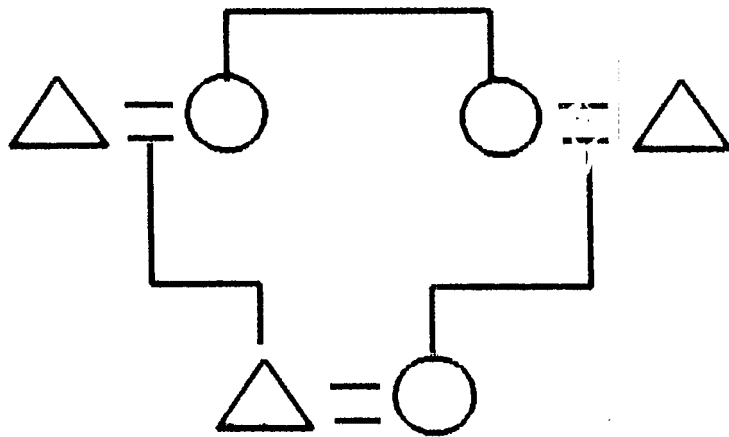


ANTICIPATORY LEVIRATE:

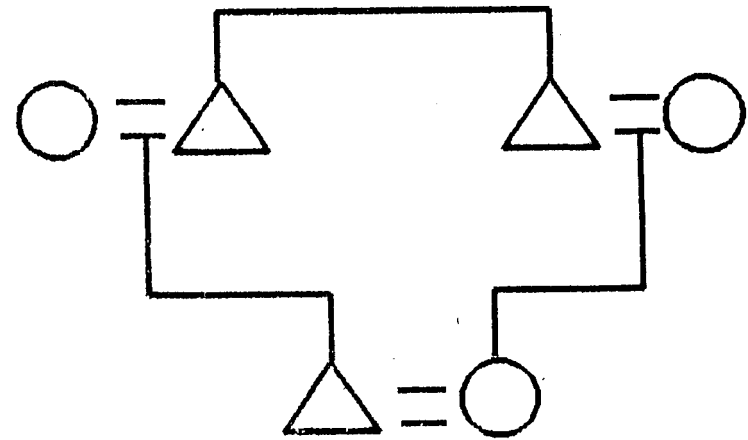


# PARALLEL COUSIN MARRIAGE

Matrilateral

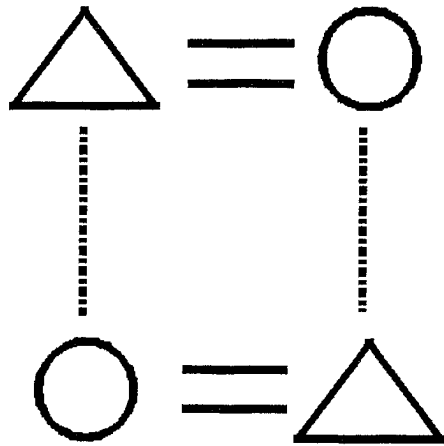


Patrilateral



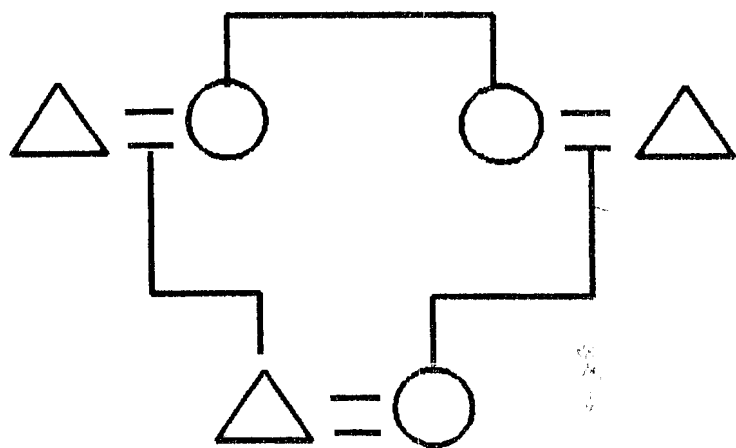
# WIFE EXCHANGE TO SEAL FRIENDSHIPS

---

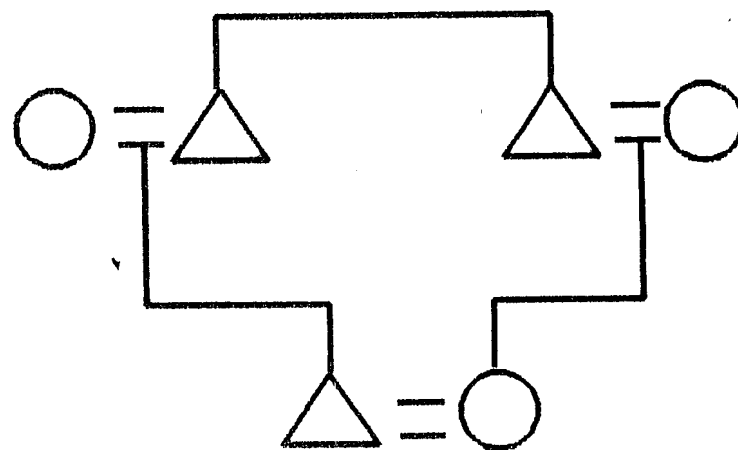


# PARALLEL COUSIN MARRIAGE

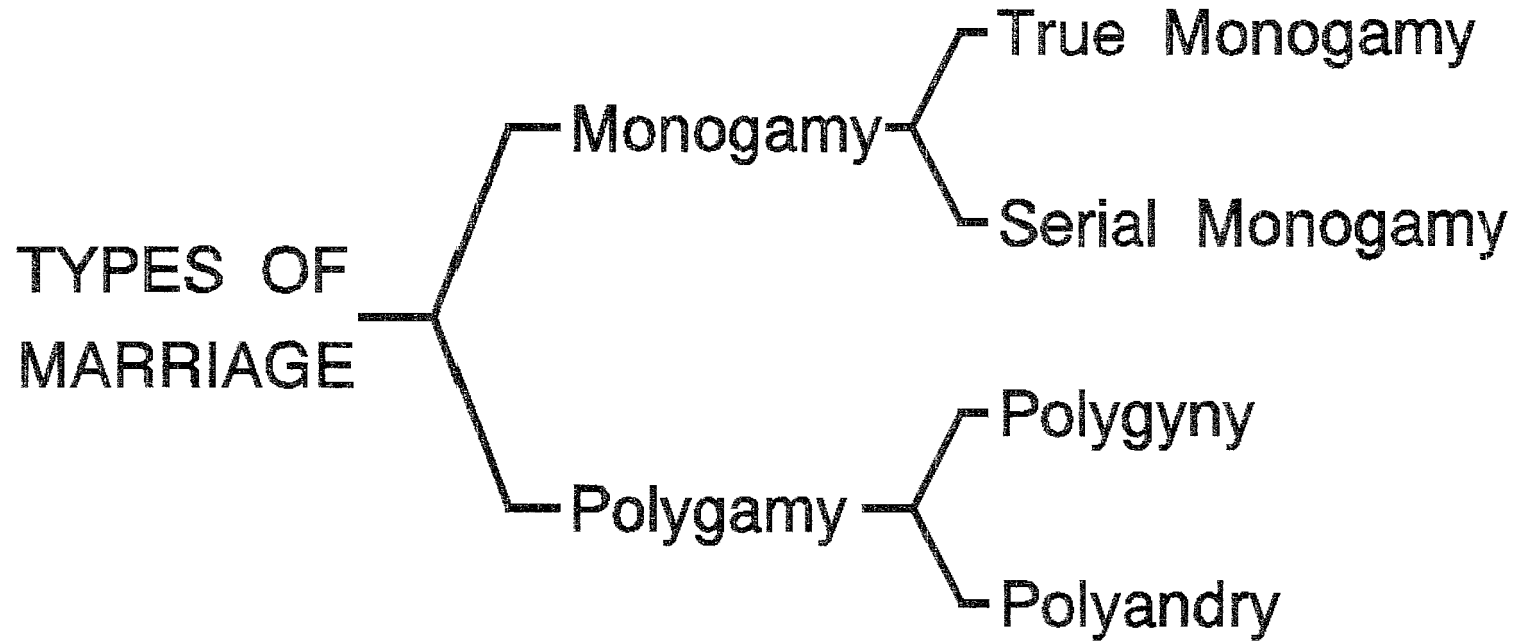
Matrilateral



Patrilateral



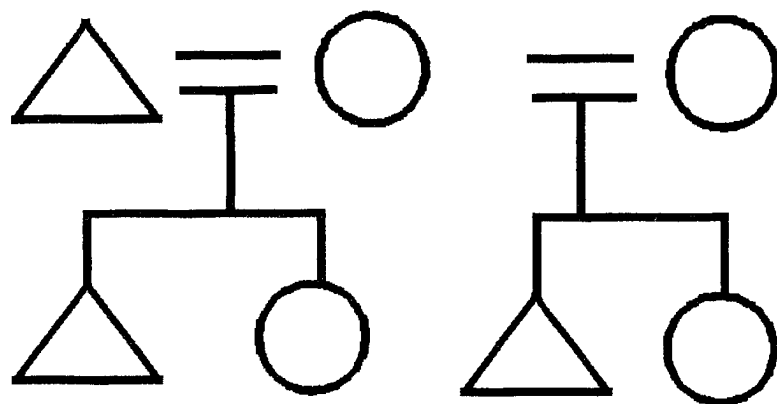
# MARRIAGE



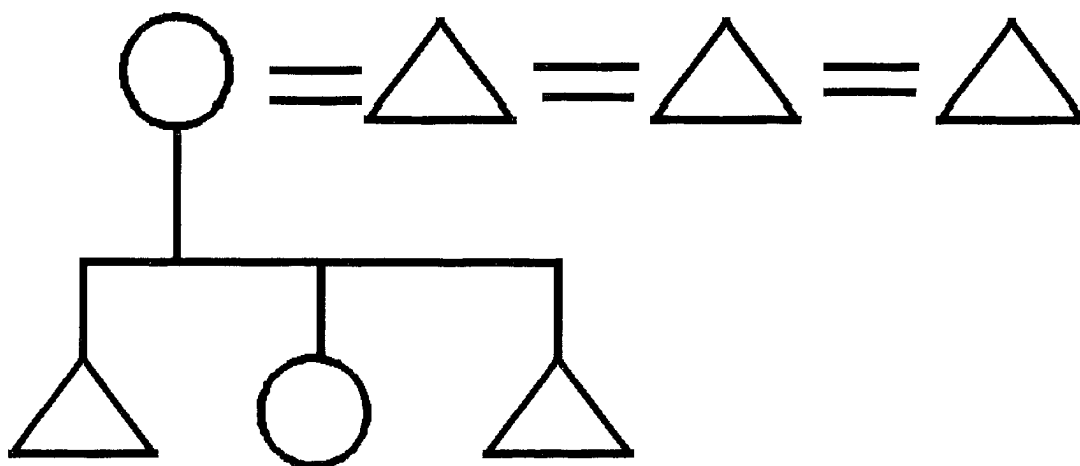


# TYPES OF POLYGAMOUS FAMILIES

POLYGYNOUS FAMILY:



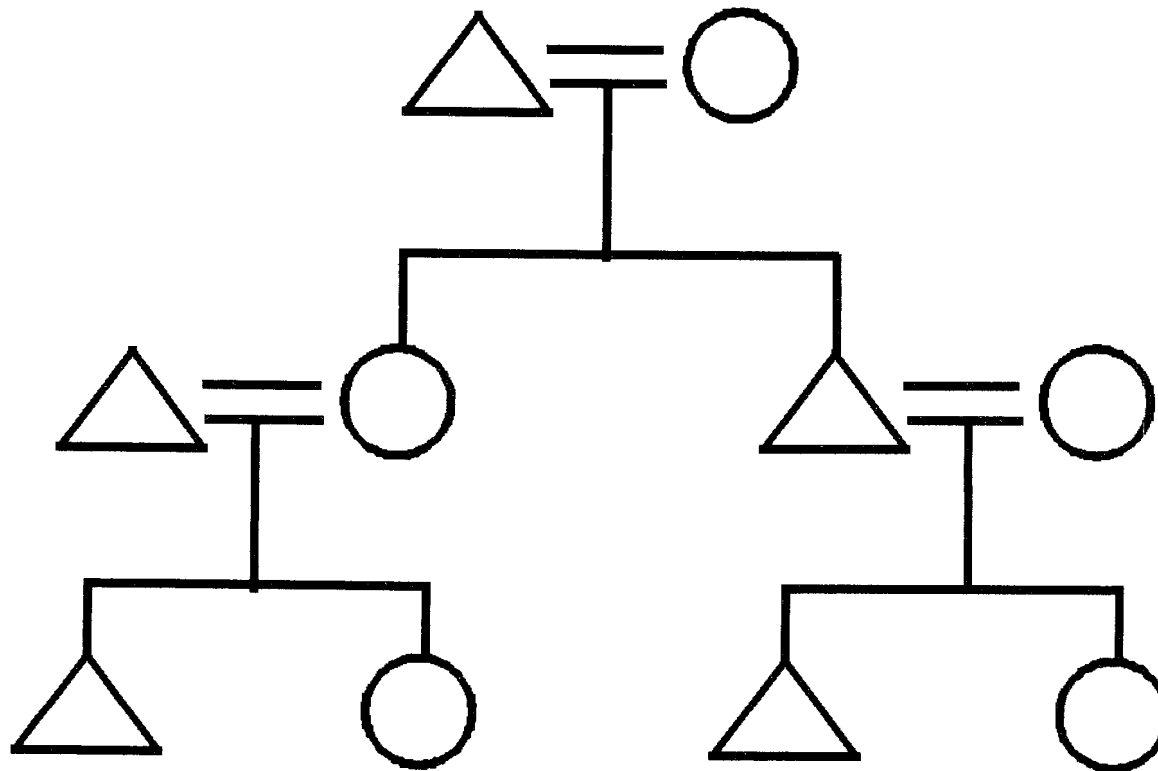
POLYANDROUS FAMILY:



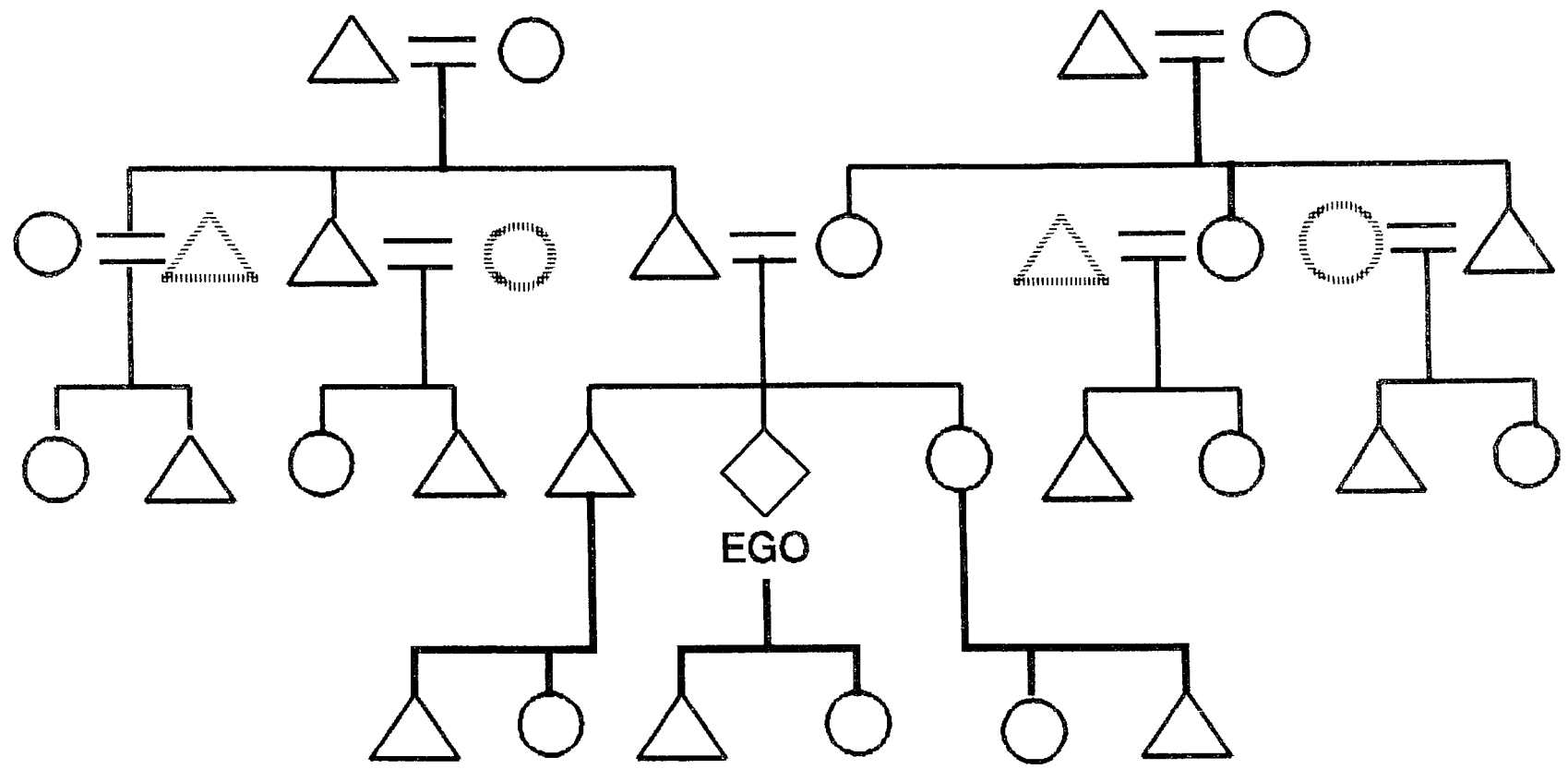
## CAUSES OF POLYGAMY

1. Care for widows and orphans.
2. Barrenness of first wife.
3. Help in work.
4. Status, power and leadership.
5. Post-partum taboo.
6. Cement relationships to other groups to prevent feuds and wars.
7. Satisfy sexual drive.

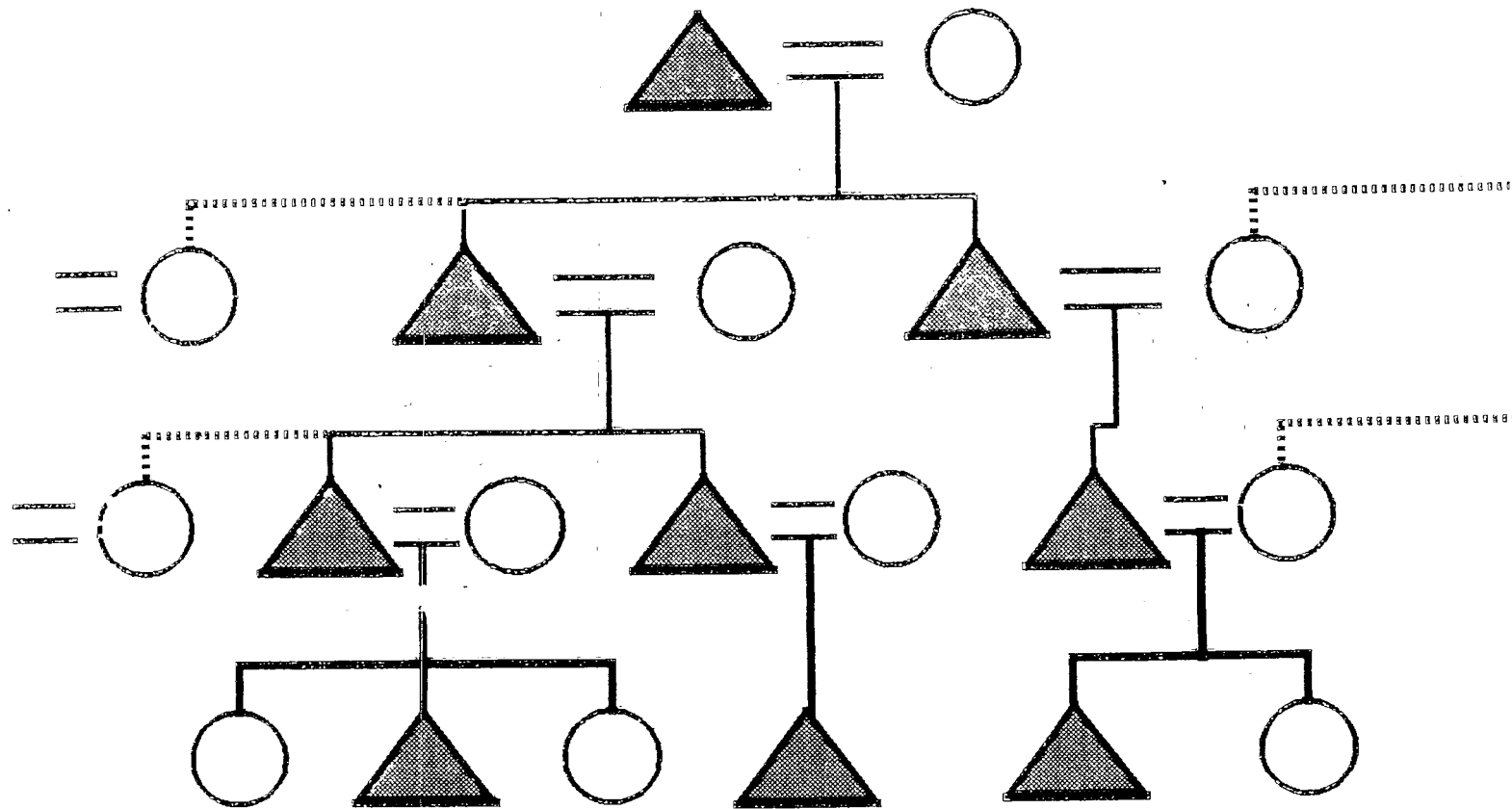
# THE LOYALTY CONFLICT BETWEEN FAMILIES



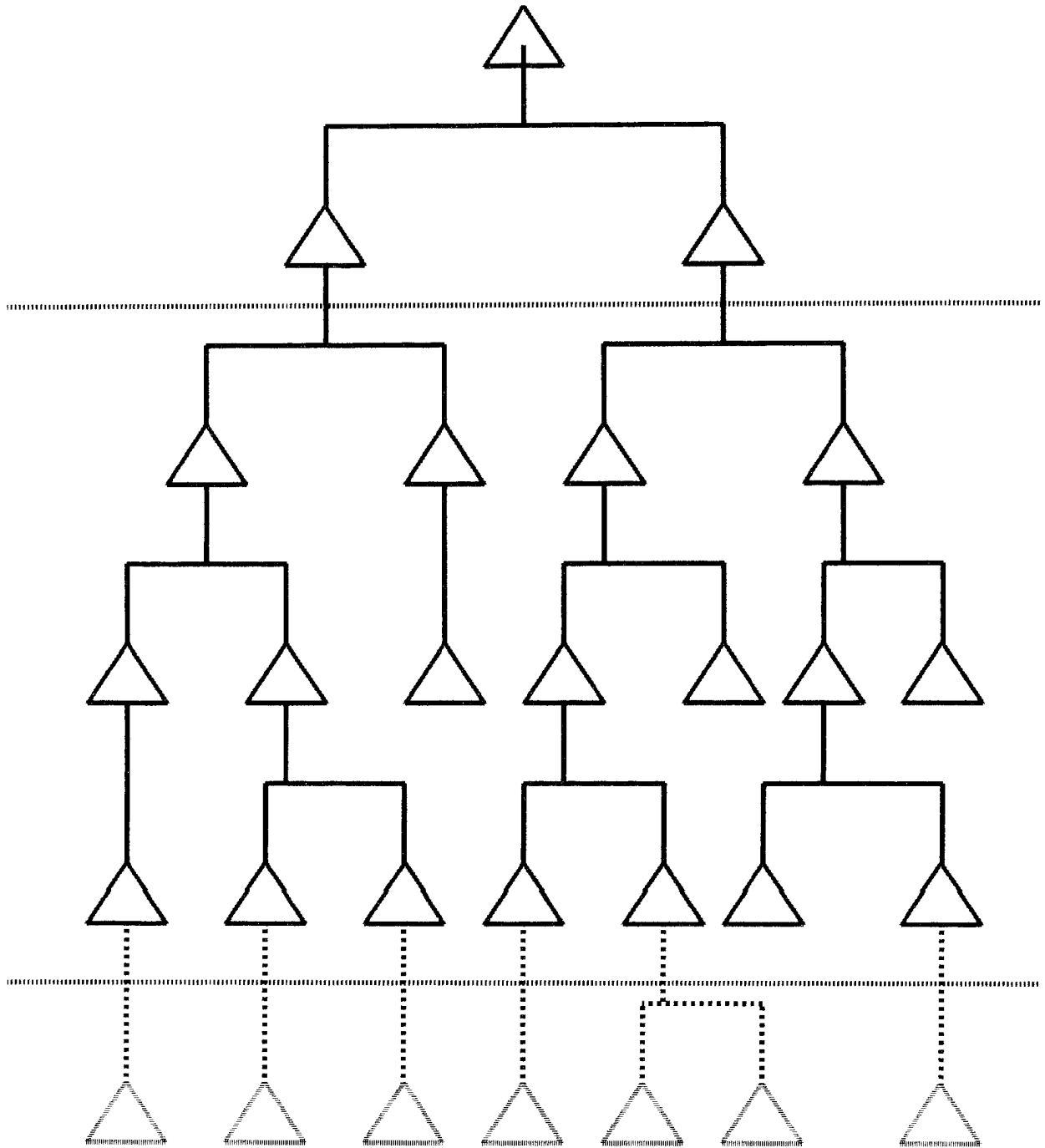
# WESTERN KINSHIP ORGANIZATION



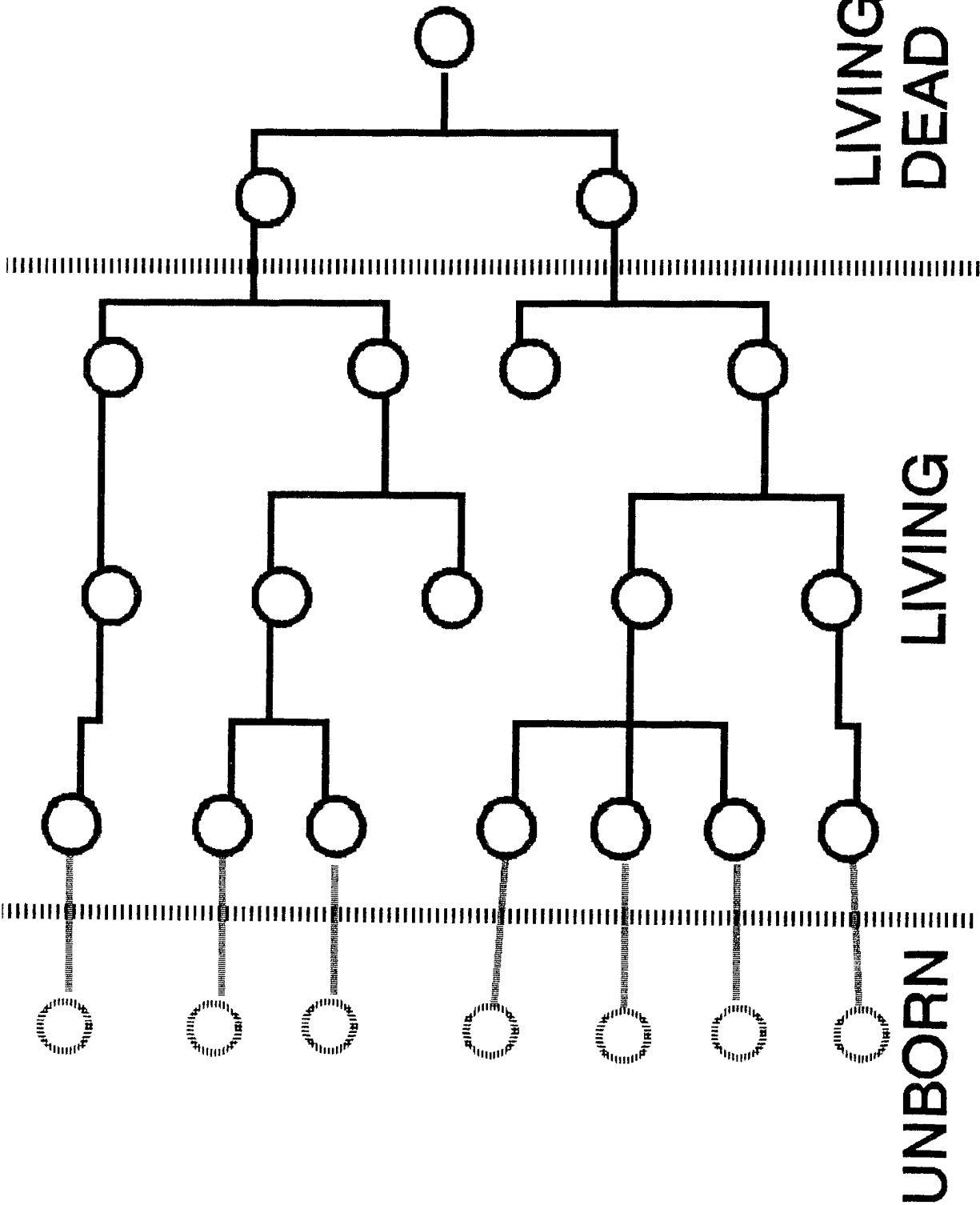
# PATRILINEAL EXTENDED FAMILY



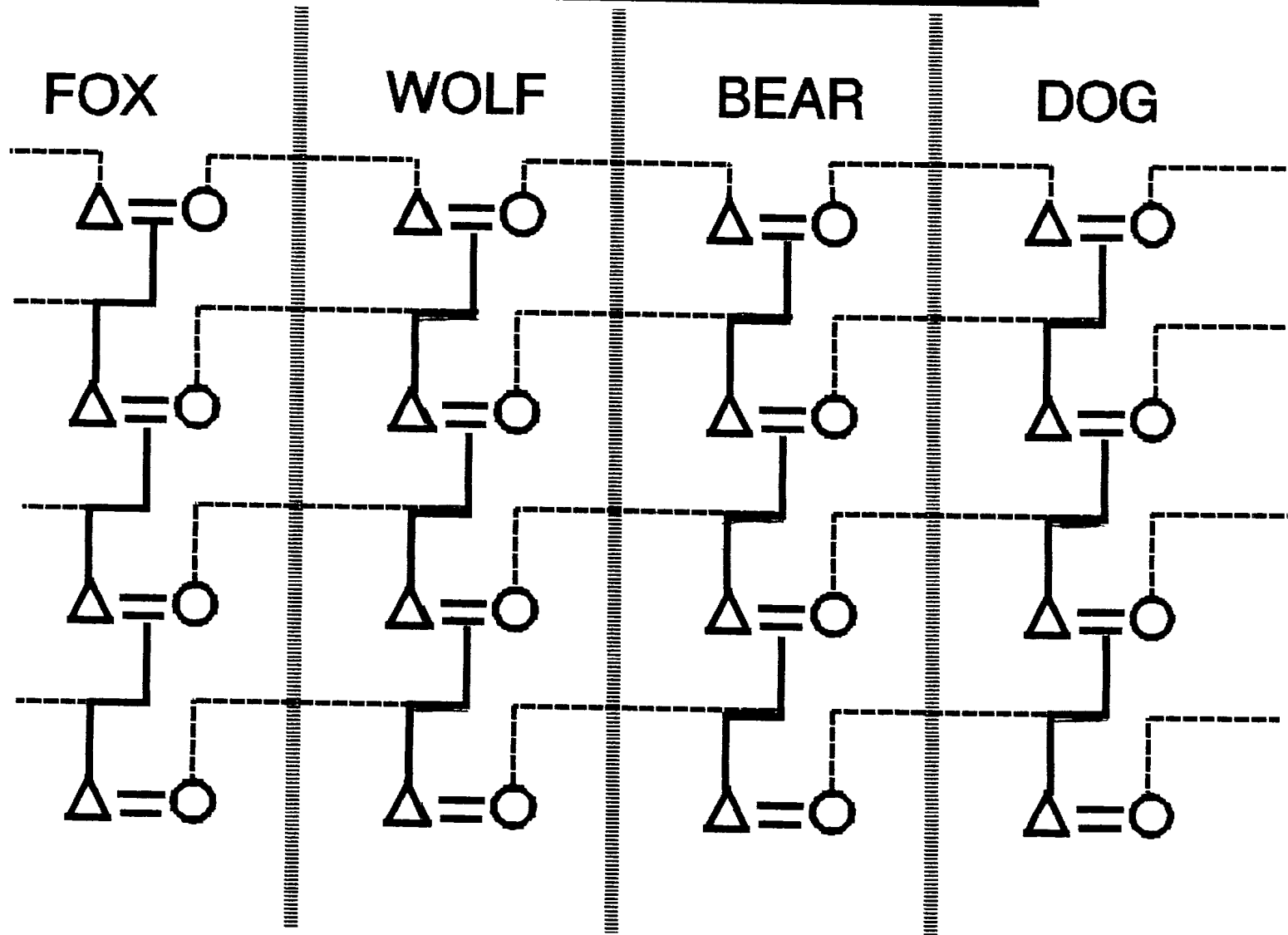
# PATRILINEAL SOCIETY



# MATRILINEAL SOCIETIES



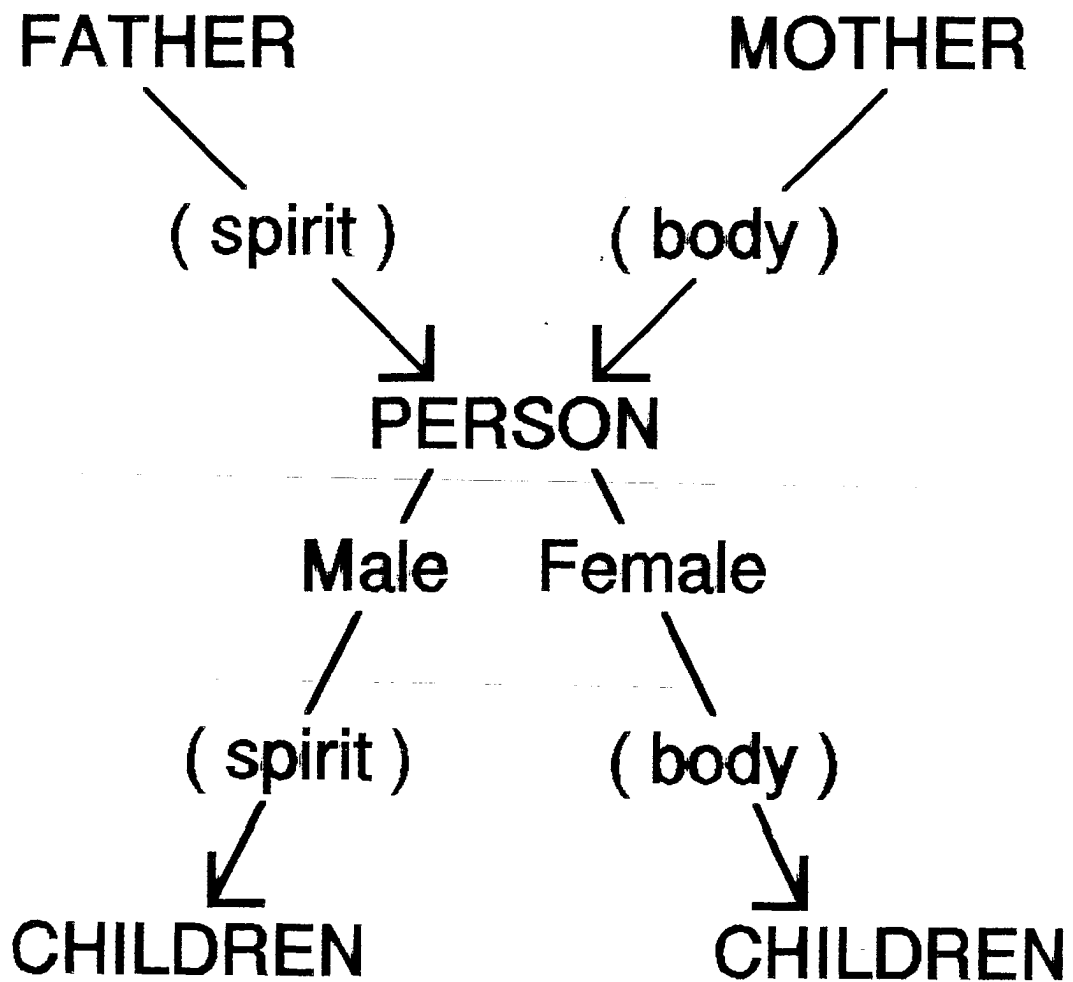
# MATRILATERAL CROSS-COUSIN MARRIAGE NETWORK





# ASHANTI SYSTEM OF DOUBLE DESCENT

---



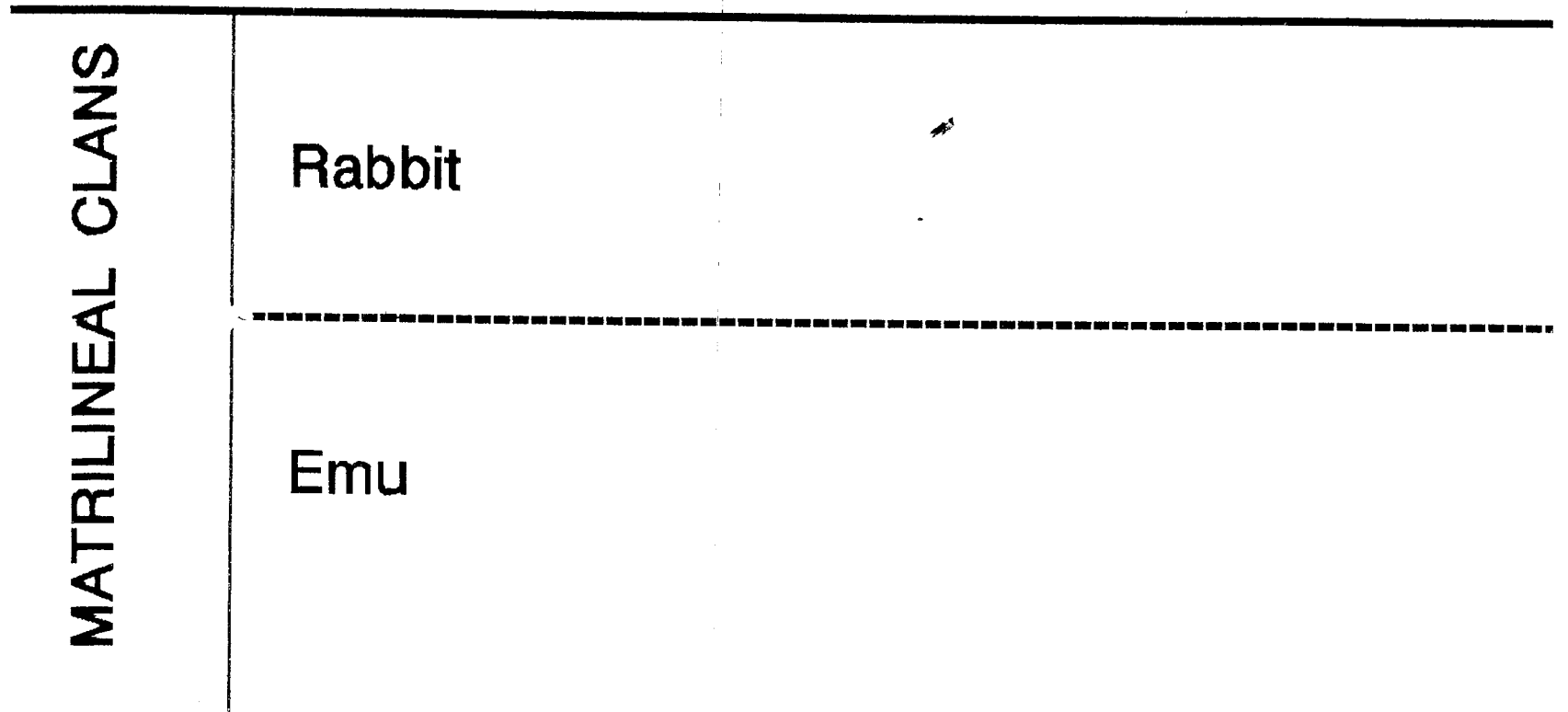
# DOUBLE DESCENT KINSHIP SYSTEMS

## PATRILINEAL CLANS

Fox

Lion

# DOUBLE DESCENT KINSHIP SYSTEMS



# DOUBLE DESCENT KINSHIP SYSTEMS

|                   |        | PATRILINEAL CLANS |      |
|-------------------|--------|-------------------|------|
|                   |        | Fox               | Lion |
| MATRILINEAL CLANS | Rabbit |                   |      |
|                   | Emu    |                   |      |

# **CHARACTERISTICS OF LINEAGES, CLANS AND TRIBES**

- 1. Lineages and clans are exogamous.  
Tribes are endogamous.**
- 2. All may own land, and let members use it (usufruct).**
- 3. All make major decisions.**
- 4. All discipline offending members.**

## **THE DIFFERENCE BETWEEN LINEAGES AND CLANS**

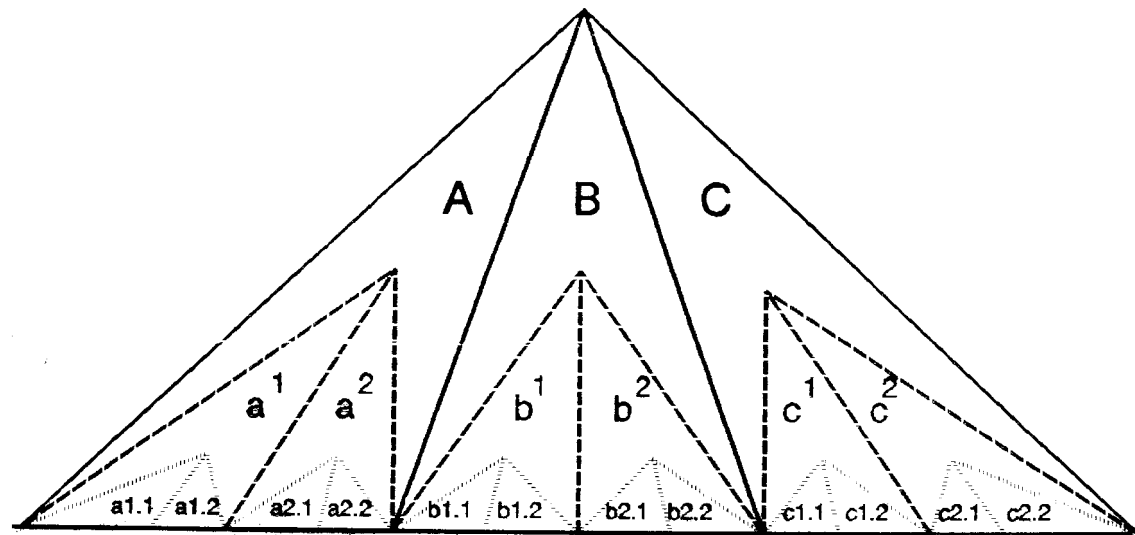
---

**LINEAGE:** People related by descent through the male or female line through known progenitors to one ancestor or ancestress.

**CLAN:** People related by descent through the male or female line through known and unknown or fictional progenitors to one ancestor or ancestress.

# The Social Structure of a Tribe

---



- Key:**
- A** = Major kinship groupings such as clans
  - a<sup>1</sup>** = Secondary kinship groupings such as primary, secondary and tertiary lineages
  - a1.1** = Family groupings such as extended, nuclear families, and mother-children households